

Where can I find more information?

In accordance with the Act, more detailed information will be published within the next three months. In the meantime here are some useful contacts:

- Your child's school
- Children's Services, Stirling Council – www.stirling.gov.uk/childrensservices or initial enquiries to Margaret Learmonth. tel. 01786 442658, e-mail learmonthm@stirling.gov.uk
- Free and independent advice is available from:
Advocacy ASL – tel. 0845 223 5385/6, e-mail iblair@childreninscotland.org.uk
- The Scottish Advice Service for ASL – tel. 0845 123 2303 or www.enquire.org.uk



إذا تلاقي صعوبة بفهم اللغة الإنكليزية وتودّ الترجمة، رجاءً اتصل بالمجلس البلدي على الرقم 0845 277 7000 حيث يمكن أن نرتب هذا لك.

如果你看不懂英文，而又希望取得中文翻譯版本的話，請致電 0845 277 7000 與地方議會聯絡，我們便會為你作出有關安排。

ਜੇ ਤੁਹਾਨੂੰ ਅੰਗ੍ਰੇਜ਼ੀ ਸਮਝਣ ਵਿੱਚ ਮੁਸ਼ਕਲ ਹੈ ਅਤੇ ਇਸਦਾ ਅਨੁਵਾਦ ਚਾਹੁੰਦੇ ਹੋ ਤਾਂ ਕ੍ਰਿਪਾ ਕਰਕੇ ਕੌਂਸਲ ਨਾਲ 0845 277 7000 ਨੰਬਰ ਤੇ ਸੰਪਰਕ ਕਰੋ ਅਤੇ ਅਸੀਂ ਤੁਹਾਡੇ ਲਈ ਇਸਦਾ ਪ੍ਰਬੰਧ ਕਰ ਸਕਦੇ ਹਾਂ।

انگریزی زبان سمجھنے میں اگر آپ کو مشکل پیش آتی ہے اور اگر آپ کو ترجمہ شدہ دستاویز کی ضرورت ہو تو برائے مہربانی کاؤنسل سے فون نمبر 0845 277-7000 پر رابطہ کیجئے۔ آپ کے لیے اردو میں ترجمے کے انتظام کیا جائے گا۔



Children's Services

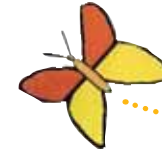
The new Additional Support for Learning (Scotland) Act 2004

Commenced on 14th November 2005



Advice for

Parents
Children and
Young People



Children's Services

What is the act about?



Some children and young people need extra help to get the most out of their education.

From 14th November 2005 a new law places a duty on Education Authorities to ensure all children and young people get that extra help.

In Stirling Council, Education, Social Work and Early Years services are provided by Children's Services.



What are additional support needs?

This is a new term, which now covers any child who faces a barrier to learning e.g.

- bullying
- disability
- bereavement
- family circumstances

Children who presently have a Record of Needs will continue to receive the support for their learning. All will be reassessed within the next two years to decide if a Co-ordinated Support Plan needs to be in place.

What is a co-ordinated support plan?



A number of children and young people will have additional support needs arising from complex or multiple factors. They will require a high degree of co-ordination of support from education authorities and other agencies. A Co-ordinated Support Plan will be completed for them.

The plan will set the aims of what the child should learn and build on the child's strengths. This does not mean that children without a Co-ordinated Support Plan will lose out, as they will continue to get the support they need for their learning.

